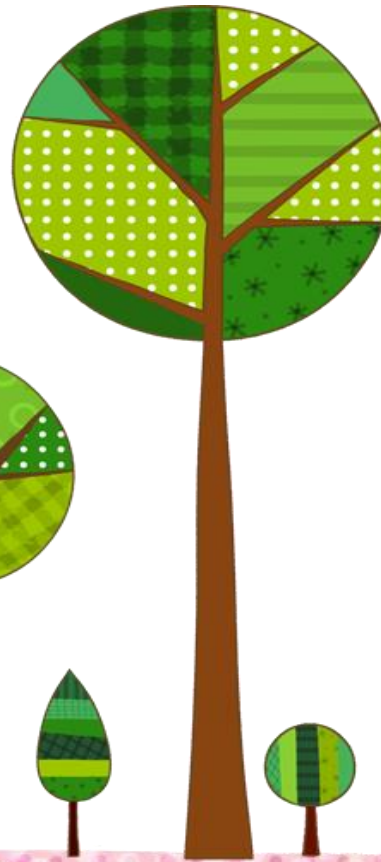


ELC Improvement Journey

2023/24



Our Vision

We will strive to create a learning community where our children grow and flourish as confident, independent vision makers.



friendly

Greenrigg
ELC

welcoming

motivating

Leaders of their own learning

Real life experiences

Froebelian approach and other pedagogies

Work collaboratively

Continuously evaluating

Environment where everyone's voice is heard

happy

Inclusive

Our Values and Aims





Our curriculum framework Greenrigg ELC



Our vision:

We will strive to create a learning community where our children grow and flourish as confident, independent vision makers.

Our values:

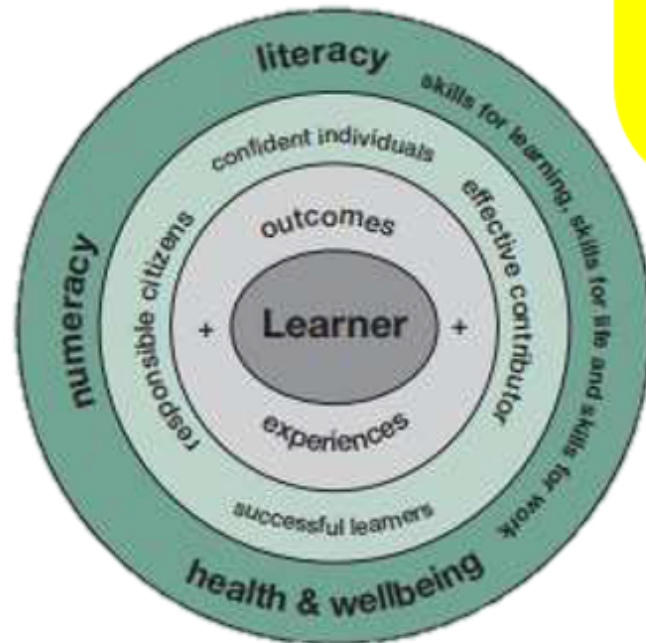
- Happy
- Welcoming
- Friendly
- Motivating
- Inclusive

Our aims:

- To encourage all of our children to become leaders of their own learning by creating an environment which promotes curiosity, inquiry and creativity.
- To continue to provide a wide range of learning opportunities and real life experiences that will challenge our learners.
- To further explore the Froebelian approach and other pedagogies that will positively impact our curriculum rationale.
- To share responsibility as we work collaboratively ensuring a consistent approach across the setting for all.
- We care about all our service users and will continue to provide a welcoming and supportive environment where everyone's voice is heard.
- We are continuously evaluating ourselves, our practice and our provision enabling us to improve outcomes for our learners.

GIRFEC Wellbeing indicators:

- Safe
- Healthy
- Achieving
- Nurtured
- Active
- Respected
- Responsible
- Included



Principles for Curriculum Design

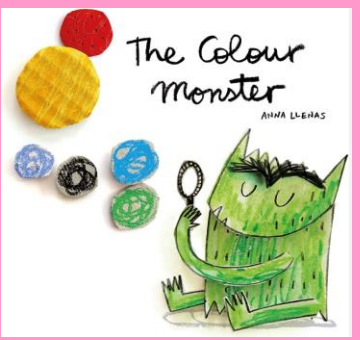
- Challenge and enjoyment
- Breadth
- Progression
- Depth
- Personalisation and choice
- Coherence
- Relevance



We will...



Health and Wellbeing



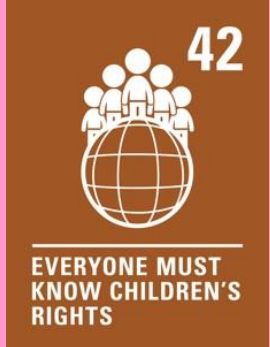
- Look closely at tracker statements**
- I can form friendships with my peers
 - I can display fine motor skills
 - I can cope with everyday new situations



Continue to check in about wellbeing everyday using the colour monster and JIGSAW themes

Build learners understanding of their rights

Continue with Parental engagement session will continue in the form of PEEP/Stay and Play and Visits to the nursery



We will...

Literacy and Numeracy

Look closely at tracker statements for literacy:

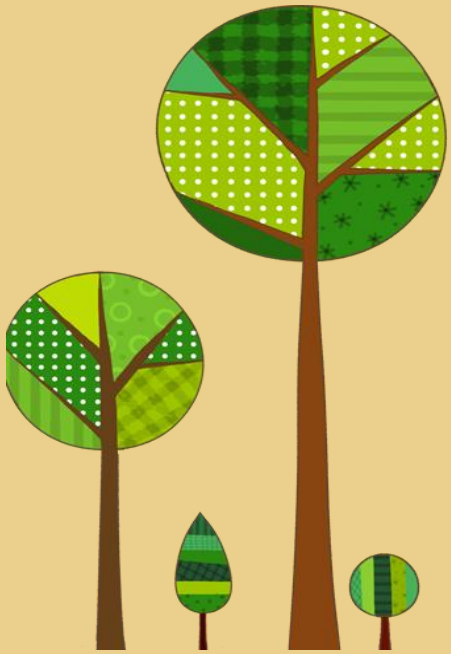
- I can listen and identify words that rhyme
- I can understand and use a range of questions and respond appropriately

Look closely at tracker statements for numeracy:

- I can read numerals zero to a least 10
- I can understand the language of time
- I can copy and repeat a complex pattern

Key workers to continue to use a range of questions to extend and deepen learning

Key workers to continue to use a range of audit tools to support consistent high quality play experiences both inside and outdoors



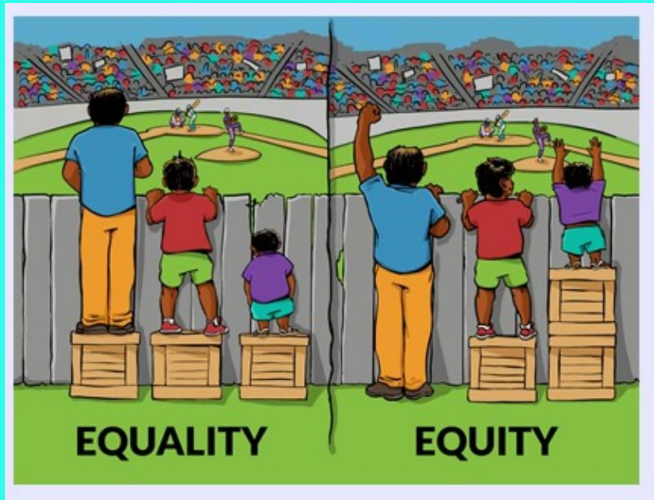
We will...



*'All West Lothian schools are committed to continuously developing their approach to ensure equity and tackle the poverty related attainment gap. Each school's **PEF Summary** provides an overview of their approach and an outline of how Pupil Equity Funding is being used to provide a range of universal and targeted approaches and interventions*

Please scan the black QR CODE to view our PEF Summary and find out more about our use of 'Pupil Equity Funding.'

Please scan the blue QR code to see our Cost of the School Day Statement highlighting the many ways that we support families.

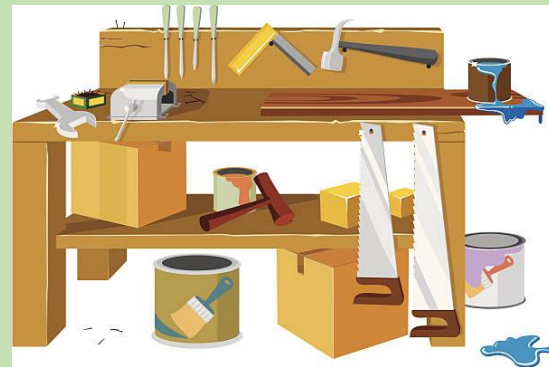


We will...

Skills development across the curriculum

Extend further opportunities across the nursery for Science and Technology developing early numeracy skills through the outdoors and woodwork bench.

science & EVERYWHERE



Extend further opportunities for local walks, forest walks and making effective use of the local community.



Provide a range of opportunities for children to learn French vocabulary and be involved in focus weeks in line with the school at early level.

